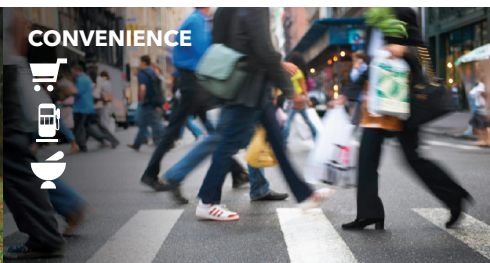




## 183 Rykert St


St. Catharines, ON  
HOODQ DETAILED REPORT™

Mike Heddle | Broker  
905.574.7441  
[TheHeddleGroup.ca](http://TheHeddleGroup.ca)



## PUBLIC SCHOOLS (ASSIGNED)

Your neighbourhood is part of a community of Public Schools offering Elementary, Middle, and High School programming. See the closest Public Schools near you below:

 about a 6 minute walk - 0.42 KM away


Pre-Kindergarten, Kindergarten, Elementary and Middle

130 Rykert St, St. Catharines, ON L2S 2B4, Canada

Westdale is a great community school with children who enjoy coming to school each day. Our staff is very dedicated and we provide the highest level of quality education to our students. We believe that every student can be successful, given the right supports.

<http://westdale.dsbni.org...>

<b>Address</b>	130 Rykert St, St. Catharines, ON L2S 2B4, Canada
<b>Language</b>	English
<b>Date Opened</b>	01-09-1969
<b>Grade Level</b>	Pre-Kindergarten, Kindergarten, Elementary and Middle
<b>School Type</b>	Public
<b>Phone Number</b>	905-682-9284
<b>School Board</b>	DSB Niagara
<b>School Number</b>	598984
<b>Grades Offered</b>	PK to 8
<b>School Board Number</b>	B66150
<b>District Description</b>	London Regional Office

 about a 7 minute walk - 0.53 KM away

High and Middle

130 Louth St, St Catharines, ON L2S 2T4, Canada

At DSBN Academy, we share a common goal for each and every one of our students. We want our students to be prepared to distinguish themselves academically and be competitively eligible for admission to a college or university. Most importantly, we want them to graduate from college or university and we believe in our key strategies to supporting this vision.

<http://academy.dsbn.org...>

<b>Address</b>	130 Louth St, St Catharines, ON L2S 2T4, Canada
<b>Language</b>	English
<b>Date Opened</b>	02-09-2013
<b>Grade Level</b>	High and Middle
<b>School Type</b>	Public
<b>Phone Number</b>	905-684-8708
<b>School Board</b>	DSB Niagara
<b>School Number</b>	935455
<b>Grades Offered</b>	6 to 12
<b>School Board Number</b>	B66150
<b>District Description</b>	London Regional Office

2.82 KM away

High

101 Glen Morris Dr, St. Catharines, ON L2T 2Z9, Canada

Sir Winston Churchill S.S. is a spirited and supportive community school located in south St Catharines. Approximately 30% of our students take French Immersion classes and we offer two Specialist High Skills Major programs (one in Information and Communications Technology, and the other in Arts and Culture). Our academic and co-curricular programs are strong and diverse, offering a pathway to success for all students.

<https://sirwinston.dsbn.org...>

<b>Address</b>	101 Glen Morris Dr, St. Catharines, ON L2T 2Z9, Canada
<b>Language</b>	English
<b>Date Opened</b>	01-09-1969
<b>Grade Level</b>	High
<b>School Type</b>	Public
<b>Phone Number</b>	905-684-6349
<b>School Board</b>	DSB Niagara
<b>School Number</b>	942464
<b>Grades Offered</b>	9 to 12
<b>Additional Details</b>	French Immersion
<b>School Board Number</b>	B66150
<b>District Description</b>	London Regional Office

3.67 KM away

High

34 Catherine St, St. Catharines, ON L2R 5E7, Canada

St. Catharines Collegiate has had a long tradition of academic, artistic and athletic excellence nurtured by a faculty committed to preparing students well for post secondary studies and for their role as responsible and productive members of our society. Our diverse student population, representing over 36 different countries, contributes to an

institution where social justice and equity set the framework for a dynamic education driven by 21st century technologies and teaching styles.

<http://collegiate.dsbni.org...>

<b>Address</b>	34 Catherine St, St. Catharines, ON L2R 5E7, Canada
<b>Language</b>	English
<b>Date Opened</b>	01-09-1969
<b>Grade Level</b>	High
<b>School Type</b>	Public
<b>Phone Number</b>	905-687-7301
<b>School Board</b>	DSB Niagara
<b>School Number</b>	944157
<b>Grades Offered</b>	9 to 12
<b>Additional Details</b>	English as a Second Language
<b>School Board Number</b>	B66150
<b>District Description</b>	London Regional Office

5.14 KM away

Elementary and Middle

91 Bunting Rd, St. Catharines, ON L2P 3G8, Canada

Jeanne Sauvé French Immersion Public School serves students from Grade One to Grade Eight. Students in the French Immersion program take the same subjects as the students in the English program. The students will study the French language and other subjects such as Mathematics, Science, Geography, History and possibly the Arts and Physical Education in French. Designated school pathways have been developed to ensure that students have a continuation of program from their entry level to the end of Grade 12.

<http://jeannesauve.dsbni.org...>

<b>Address</b>	91 Bunting Rd, St. Catharines, ON L2P 3G8, Canada
<b>Language</b>	English
<b>Date Opened</b>	01-09-2014
<b>Grade Level</b>	Elementary and Middle
<b>School Type</b>	Public
<b>School Board</b>	DSB Niagara
<b>School Number</b>	264237
<b>Grades Offered</b>	1 to 8
<b>Additional Details</b>	French Immersion
<b>School Board Number</b>	B66150
<b>District Description</b>	London Regional Office

6.7 KM away

Pre-Kindergarten, Kindergarten, Elementary and Middle

35 Prince Charles Dr, St. Catharines, ON L2N 3Y8, Canada

<https://csviamonde.ca...>

<b>Address</b>	35 Prince Charles Dr, St. Catharines, ON L2N 3Y8, Canada
<b>Language</b>	French
<b>Date Opened</b>	30-09-1971
<b>Grade Level</b>	Pre-Kindergarten, Kindergarten, Elementary and Middle
<b>School Type</b>	Public
<b>Phone Number</b>	905-937-4608
<b>School Board</b>	CS Viamonde

<b>School Number</b>	419354
<b>Grades Offered</b>	PK to 8
<b>School Board Number</b>	B66303
<b>District Description</b>	Toronto and Area Regional Office

16.83 KM away

High, Elementary, Middle, Kindergarten and Pre-Kindergarten

670 Tanguay Ave, Welland, ON, Canada

<https://csviamonde.ca...>

<b>Address</b>	670 Tanguay Ave, Welland, ON, Canada
<b>Language</b>	French
<b>Date Opened</b>	01-09-1969
<b>Grade Level</b>	High, Elementary, Middle, Kindergarten and Pre-Kindergarten
<b>School Type</b>	Public
<b>Phone Number</b>	905-732-1361
<b>School Board</b>	CS Viamonde
<b>School Number</b>	907553
<b>Grades Offered</b>	PK to 12
<b>School Board Number</b>	B66303
<b>District Description</b>	Toronto and Area Regional Office

## CATHOLIC SCHOOLS (ASSIGNED)

Your neighbourhood is part of a community of Catholic Schools offering Elementary, Middle, and High School programming. See the closest Catholic Schools near you below:



about a 10 minute walk - 0.75 KM away

Pre-Kindergarten, Kindergarten, Elementary and Middle

81 Rykert St, St. Catharines, ON L2S 1Z2, Canada

The St. Anthony Catholic Elementary School Community provides a safe, inclusive and nurturing environment for its 500 students and 325 families. With the support of incredible students, an outstanding staff and a wonderfully supportive parent community, the St. Anthony Catholic School Community works tirelessly to ensure that each of the 500 gifts we have been given, grow to be the academic, creative and spiritual young people that God has called them to be.

<https://schools.niagaracatholic.ca...>

<b>Address</b>	81 Rykert St, St. Catharines, ON L2S 1Z2, Canada
<b>Language</b>	English
<b>Date Opened</b>	01-09-1969
<b>Grade Level</b>	Pre-Kindergarten, Kindergarten, Elementary and Middle
<b>Orientation</b>	Catholic
<b>School Type</b>	Public
<b>Phone Number</b>	905-685-8859
<b>School Board</b>	Niagara CDSB
<b>School Number</b>	773344
<b>Grades Offered</b>	PK to 8
<b>Additional Details</b>	Religious
<b>School Board Number</b>	B67156
<b>District Description</b>	London Regional Office

2.34 KM away

High

40 Glen Morris Dr, St. Catharines, ON L2T 2M9, Canada

<http://www.denismorris.ca...>

<b>Address</b>	40 Glen Morris Dr, St. Catharines, ON L2T 2M9, Canada
<b>Language</b>	English
<b>Date Opened</b>	01-09-1969
<b>Grade Level</b>	High
<b>Orientation</b>	Catholic
<b>School Type</b>	Public
<b>Phone Number</b>	905-684-8731
<b>School Board</b>	Niagara CDSB
<b>School Number</b>	703796
<b>Grades Offered</b>	9 to 12
<b>Additional Details</b>	Religious
<b>School Board Number</b>	B67156
<b>District Description</b>	London Regional Office

3.72 KM away

Pre-Kindergarten, Kindergarten, Elementary and Middle

12 Burleigh Hill Dr, St. Catharines, ON L2T 2V5, Canada

Notre école accueille les élèves de la maternelle (4 ans) à la 8e année. Elle offre une éducation de qualité dans un environnement catholique de langue française. Notre communauté est très unie et impliquée, le personnel enseignant est dynamique et engagé.

<https://smbcscsmonavenir.ca...>

<b>Address</b>	12 Burleigh Hill Dr, St. Catharines, ON L2T 2V5, Canada
<b>Language</b>	French
<b>Date Opened</b>	01-09-1989
<b>Grade Level</b>	Pre-Kindergarten, Kindergarten, Elementary and Middle
<b>Orientation</b>	Catholic
<b>School Type</b>	Public
<b>Phone Number</b>	905-227-4002
<b>School Board</b>	CS catholique MonAvenir
<b>School Number</b>	838632
<b>Grades Offered</b>	PK to 8
<b>Additional Details</b>	Before/After School and Religious
<b>School Board Number</b>	B67318
<b>District Description</b>	Toronto and Area Regional Office

14.35 KM away

High

620 River Rd, Welland, ON L3B 5N4, Canada

L'école secondaire catholique Saint-Jean-de-Brébeuf a été fondée en 1992 dans le but d'offrir à nos adolescents une chance équitable de poursuivre leurs études au palier secondaire dans un milieu de vie catholique francophone où ils auraient l'occasion d'affirmer leur appartenance à la collectivité franco-ontarienne.

<https://esjdb.cscmonavenir.ca...>

<b>Address</b>	620 River Rd, Welland, ON L3B 5N4, Canada
<b>Language</b>	French
<b>Date Opened</b>	01-09-1993
<b>Grade Level</b>	High
<b>Orientation</b>	Catholic
<b>School Type</b>	Public
<b>Phone Number</b>	905-714-7882
<b>School Board</b>	CS catholique MonAvenir
<b>School Number</b>	782017
<b>Grades Offered</b>	9 to 12
<b>Additional Details</b>	Religious
<b>School Board Number</b>	B67318
<b>District Description</b>	Toronto and Area Regional Office

## PRIVATE SCHOOLS

See a list of the closest private schools near you:

2.08 KM away

4.33 KM away

## PARKS & REC.

Whether you want to sit at a park bench with a good book or use one of the special facilities offered, you'll be happy to know that your neighbourhood is close to many wonderful recreational opportunities. See Parks and Recreation facilities near you below:



about a 4 minute walk - 0.33 KM away

31 Strada Blvd, St. Catharines, ON L2S 3L8

Shauna Park provides residents with a variety of recreational opportunities. For those who enjoy team sports, there is a basketball court, baseball backstop, volleyball net and mini soccer field. Visitors can also use the pathways for walking, jogging or children's bike rides. There is a playground for small children. The park is 1.2 hectares.

1 Playground, 1 Sports Field, 1 Basketball Court, 1 Volleyball Court, 1 Ball Diamond, and 1 Trail

<https://www.stcatharines.ca...>



about a 5 minute walk - 0.38 KM away

113 Westland St, St. Catharines, ON L2S 3X6

Westland Park is a neighbourhood park in west St. Catharines, in St. Andrew's Ward. This is a new park to the Garden City parks system. A playground and basketball court are available, a passive area and asphalt trails in this 1.21-hectare space.

1 Playground, 1 Basketball Court, and 2 Trails

<https://www.stcatharines.ca...>



about a 7 minute walk - 0.53 KM away

78 Louth St, St. Catharines, ON L2S 2T4

West Park is located in St. Andrew's Ward in west St. Catharines. This area-wide park has two lighted soccer fields and a football field for competitive play. Children can enjoy the playground on site. There are dressing rooms and washrooms. This park is 13.9 hectares.

1 Playground, 3 Sports Fields, 4 Tennis Courts, and 1 Track

<https://www.stcatharines.ca...>



about a 10 minute walk - 0.78 KM away

9 Senator Dr, St. Catharines, ON L2S 3T2

Power Glen Park, located off of Senator Drive and Westland Street, provides residents in St. Andrew's Ward with a passive park to enjoy. Walking paths, open areas and a playground can be used by neighbours in the area. This park is 1.26 hectares.

1 Playground, and 2 Sports Fields

<https://www.stcatharines.ca...>

## TRANSIT

The public transit system can be an easy, cost-effective and efficient way of getting around the city, accessible from your neighbourhood. See the closest Public Transit stops near you below:



about a 18 minute walk - 1.35 KM away

<https://www.viarail.ca...>



about a 1 minute walk - 0.04 KM away

<http://www.niagararegion.ca...>

## SAFETY

Every second matters in an emergency, and your neighbourhood is part of a dedicated safety system of emergency agencies including Fire Stations, Police Stations, and Hospitals. See the closest facilities near you below:



The state-of-the-art St. Catharines Site, which opened in March 2013, has been the catalyst for a number of significant improvements to patient care. Consolidation of the services provided in St. Catharines supports modern practices, greater teamwork and learning among providers, which leads to better outcomes. Niagara Health is a multi-site hospital that provides a wide range of inpatient and outpatient services, including Acute Care, Cancer Care, Cardiac Care, Complex Care, Emergency and Urgent Care, Kidney Care, Long-Term Care, Mental Health and Addictions, Stroke Care and Surgical Care.

2 KM away

<b>Type</b>	Acute Care, Emergency Care and Specialized Care
<b>Address</b>	1200 Fourth Ave, St Catharines, ON, L2S 0A9, Canada
<b>Phone Number</b>	905.378.4647

<https://www.niagarahealth.on.ca...>



0.97 KM away

**Address** 285 Pelham Rd, St. Catharines, ON L2R 4M7

<https://www.stcatharines.ca...>



3.07 KM away

**Address** 68 Church St, St. Catharines, ON L2R 3C6

<https://www.niagarapolice.ca...>

## CONVENIENCE

Being close to things you need every day makes life so much easier. See the conveniently located retailers near you below:



1.7 KM away

**Address** 411 Louth St, St Catharines, ON, L2S 4A2



about a 9 minute walk - 0.7 KM away

**Address** 170 Fourth Ave, St. Catharines, ON, L2S 0B6



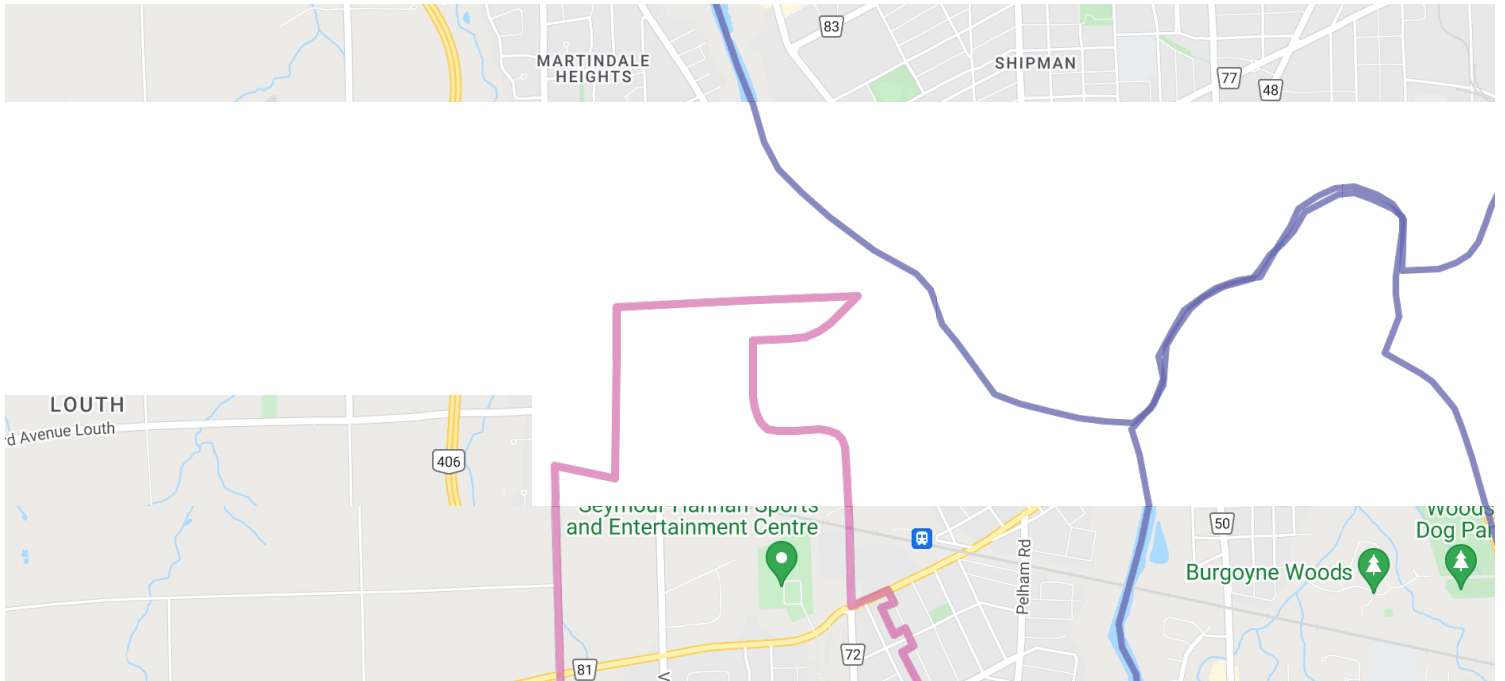
about a 9 minute walk - 0.7 KM away

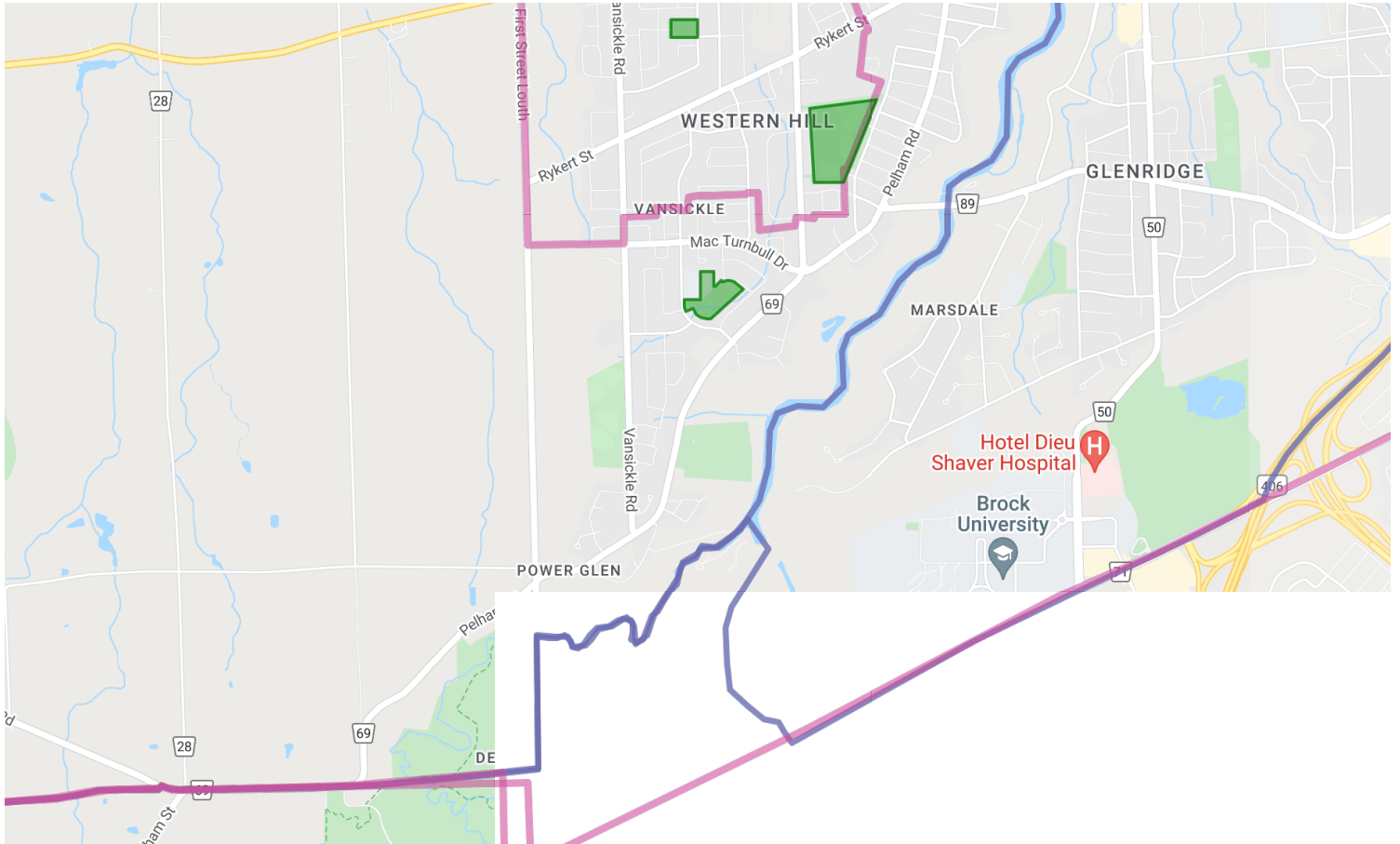
**Address** 295 Fourth Ave, St Catharines, ON, L2S 0E7






1.8 KM away

**Address** 411 Louth St, St Catharines, ON, L2S 4A2





- |  |                        |  |   |             |
|--|------------------------|--|---|-------------|
|  Elementary Schools | Middle Schools         |  High Schools |  Transit | Safety      |
| Elementary Attendance Zone   | Middle Attendance Zone | High Attendance Zone   | Parks   | Convenience |



Disclaimer: These materials have been prepared for mikeheddle@royalpage.ca and are not intended to solicit buyers or sellers currently under contract with a brokerage. By accessing this information you have agreed to our terms of service, which are hereby incorporated by reference. This information may contain errors and omissions. You are not permitted to rely on the contents of this information and must take steps to independently verify its contents with the appropriate authorities (school boards, governments etc.). As a recipient of this information, you agree not to hold us, our licensors or the owners of the information liable for any damages, howsoever caused.